



SAN DIEGO COMMUNITY COLLEGE DISTRICT

City College • Mesa College
Miramar College • Continuing Education



MEDIA ADVISORY

November 21, 2011



Media Contact:

Sandra Trevisan
Public Information Officer
San Diego Miramar College
(619) 388-7752
strevisa@sdccd.edu

Media Contact:

Ursula Kroemer
Communications Director
Propositions S & N Construction Program
(760) 705-6919
ukroemer@gafcon.com

San Diego Miramar College Celebrates Opening of “Green” Police Station

Station is bound for prestigious LEED Platinum certification; includes solar chimney and green roof and wall



What: Grand opening and open house for the new Police Station and parking structure at San Diego Miramar College, the latest San Diego Community College District project funded by Propositions S and N. The \$17.8 million project is on track to obtain a Leadership in Energy and Environmental Design (LEED) Platinum Certification by the United States Green Building Council (USGBC). This is the highest possible green building certification, and the first for a community college district locally. Currently, there are only six LEED Platinum-certified facilities in San Diego County; none are from an educational institution. The Police Station is one of 10 LEED-certified projects built or planned at Miramar and among 30 across the District.

>View a [gallery of images](#) on our Facebook page.

When: Monday, November 28, 10 a.m.

Where: 10440 Black Mountain Rd, San Diego, CA 92126. [See map.](#)

Program Speakers Include:

Charlie Hogquist, Police Chief, San Diego Community College District
Patricia Hsieh, Ed.D., President, San Diego Miramar College
Rich Grosch, President, SDCCD Board of Trustees
Michael Bulander, LEED® AP

Other Interview Opportunities:

Faculty, staff, students, architects and contractors

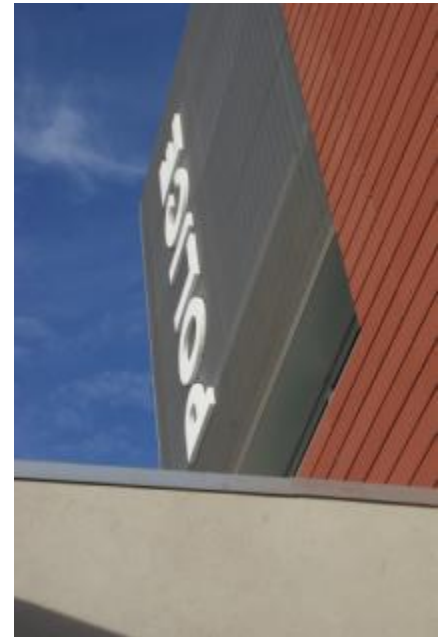
*** Spanish speaker can be made available*

Background:

The police station will include a reception area with instructional display about LEED features, a conference room, office areas, and a secure suspect processing area. These spaces are organized along the building’s perimeter to provide for a welcoming and well-lit area maximizing natural daylight. A terra cotta façade will tie the new facility into the look and feel of existing buildings on campus. The three-story parking structure will provide 815 parking spaces.

Sustainable Features

- The project includes a **green roof** and a **green screen**. The sustainability benefits include insulation from intense temperatures, the generation of a microclimate that helps restore the local habitat, and the retention of storm water.
- The tower element serves as a **solar chimney** which is a passive solar strategy to create a flow of natural ventilation. The top of the tower will heat up, and louvers will provide for air exhaust at the high point. Inside the building, exposed concrete walls and ceiling will create a **thermal mass** that can store heat during the day, and release it during the night to keep the building comfortable during operating hours.
- The police station will use **reclaimed water** for flushing toilets. Reclaimed water will be used for all irrigation needs as well.



Visuals/ Media Availability

- Ceremonial “ribbon cutting” with oversized scissors
- Raising of the flag on new flagpole
- Inaugural parking caravan
- Self-guided tours

Project Partners

Architect

Harley Ellis Devereaux – Police Station
International Parking Design (IPD) – Parking Structure

Construction Mgr.	McCarthy Building Companies
Structural Engineer	Jessen-Wright Structural Engineers
Electrical Engineer	Randall Lamb & Associates
Mechanical/Plumbing Engineer	Shadpour Consulting Engineers, Inc.
Landscape Architect	Schmidt Design Group, Inc.
Campus Project Manager	James Bray, Gafcon, Inc.
Project Manager	Charlotte Zolezzi, Gafcon, Inc.
Furniture, Fixtures & Equipment Project Manager	Tricia Hendrickson, Gafcon, Inc.
Propositions S & N Program Manager	Gafcon, Inc.

The \$1.555 billion Propositions S and N construction bond program is providing new state-of-the-art teaching and learning facilities, major renovations, parking, public safety, and campus wide infrastructure projects at City, Mesa and Miramar Colleges and six Continuing Education campuses throughout San Diego. For more information, please visit www.public.sdccdprops-n.com. For high-resolution photographs or renderings, please contact Ursula Kroemer at (760) 705-6919 or ukroemer@gafcon.com. Please also visit us on [Facebook](#).