

PROPOSITIONS S & N FACILITIES UPDATE — October 2010

This is it! The 2010 Mesa Shuffle is in its final stages and the big moves happen in October. We are seeing great progress with Proposition S & N projects and excitement is BUILDING! Thank you for your participation in the process.

Ron Perez, Vice President of Administrative Services

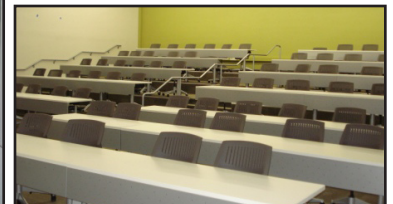
DO THE MESA SHUFFLE!

October 15	10 classrooms from F-100/200 moved to Modular Village - COMPLETE!
October 25	Surplus furniture moved to District Warehouse - COMPLETE!
October 29	8 classrooms from F-100/200 move to Mesa College Design Center
	12 classrooms from F-100/200 backfill move into K-100/200
	Construction Site Fencing goes up around F-100, F-200, J-200
November 1	Soft Demolition of F-100, F-200, J-200 begins
November 12	L-501 & L-502 move to K-109 & K-109E
December 21	Hard Demolition of F-100, F-200, J-200 begins
December 23	H201 MET administration moves to L-501 & L-502
January 19	Hard Demolition of F-100, F-200, J-200 ends

THE DOMINOES ARE FALLING

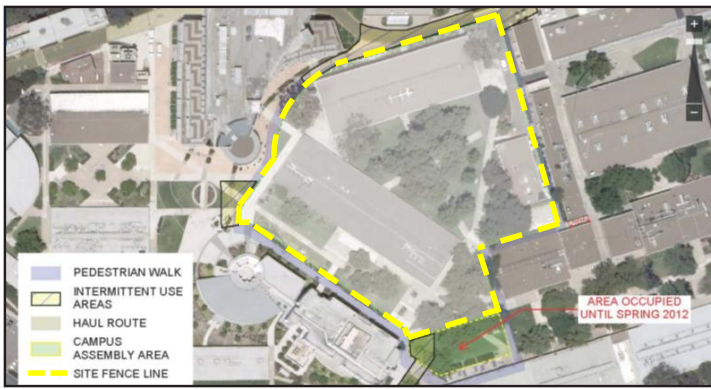
Modular Village Phase II

These additional 10 refurbished modular classrooms came to us from City College to provide swing space while we build our new campus. The first day of classes in these units was October 18th.



Mesa College Design Center

Landscaping is in place, final punchlist work is underway, and furniture, computers, and A/V systems are installed. The move-in date is this Friday, October 29th and the first day of classes will be Monday, November 1st. This will be a first class sustainable adaptive reuse project for the Design Department and Mesa College.



Demolition of F-100, F-200, J-200

Fencing will go up on October 29th and “soft” demolition will begin on November 1st. The actual hard knock-down of the 3 buildings will begin on December 21st after Fall Semester is complete. The demolition of these 3 buildings clears the way for the construction of Math + Science Building.

CENTRAL PLANT

What does the interior of a Central Plant look like? Take a peek inside. The roof deck installation is complete and roofing is started this week. Connections to chiller and boiler equipment are being made and underground electrical and plumbing is underway. The project is scheduled to complete in December and will provide heating and cooling for Student Services, Math + Science Building, I-300 and Social & Behavioral Sciences Building.



Central Plant



Student Services

STUDENT SERVICES

The majority of underground work in the upper roadway is complete. Soil nailing is wrapping up and shoring wall construction will continue through the fall semester. Structural steel framing will begin after the foundation walls and slab on grade are complete in November.

MESA COLLEGE CAMPUS Project Management Team

Campus Project Manager	Diane K. Malone A.I.A., LEED AP 619.417.2906 (cell phone) dmalone@sdccd.edu
Project Manager	Brian Browning 619.277.4576 (cell phone) bbrowning@gafcon.com
Project Manager	Mike Clark 213.494.9609 (cell phone) mclark@gafcon.com
Asst. Project Manager	Edgar Hinojosa 619.843.5751 (cell phone) ehinojosa@gafcon.com

WHAT IS IT?

Answer: Hot and Chilled Water Lines from the New Central Plant Buildings.

