



San Diego Community College District

CAD STANDARDS

Facilities Management
Architectural Department
3375 Camino del Rio South
San Diego, Ca 92108-3883
(619) 388-6546

Table of contents

ARCHITECT / ENGINEER (A/E)-consultant's responsibilities regarding drawing and file submissions	3
DRAFTING STANDARDS	4
BASIC ORGANIZATION CONCEPTS	4
FILE NAMES AND PROJECT REFERENCES	4
Guidelines for Model File Names	6
Discipline Codes	6
Drawing Type Codes that Apply to All Disciplines	6
Drawing Type Code Specific to Particular Disciplines	7
Guidelines for Sheet File Names	7
Discipline Codes	8
Sheet Type Codes (Designators)	8
Sheet Sequence Numbers	9
Examples	9
COLOR & PEN ASSIGNMENTS	9
San Diego Community College Pen Weight Table	10
Leaders	11
LAYER NAMING GUIDELINES	11
LAYER NAME FORMAT	11
Discipline Code	12
Major Group	12
Minor Group	12
Status Field	12
Viewport Scaling	13
Text Scaling and Circles	13
Text Format	14
Ltscale, Visretain, Units	14
DISTRICT CONTACTS	14
DISTRICT STANDARD LAYERS	15
Civil Engineering and Site Work	15
Architecture, Interiors, and Facilities	18
Structural	23
Mechanical	25
Plumbing	29
Fire Protection	31
Electrical	33
Electrical Auxiliary Systems:	35
Major and Minor Groups	35
Electrical Auxiliary Systems: Modifiers	35
Landscape Architecture	37
San Diego Community College District	40
CD-Rom Label Format and Instructions	40
CD-Label Background Image	40
Example	41

ARCHITECT / ENGINEER (A/E)-consultant's responsibilities regarding drawing and file submissions

A/E shall provide the DISTRICT with .DWG files compatible with AutoCAD 2005 for IBM-PC compatible computers. A/E shall provide an index of all the files and drawings. All submittals shall be reviewed by District staff and evaluated based on the following requirements:

1. Format shall be 24" x 36" sheets unless alternate size is approved by DISTRICT and shall have district title block (AutoCAD title block drawing to be supplied by DISTRICT).
2. Drawings shall adhere to DISTRICT layering system (based on the AIA Layering Guidelines –second edition). District layering information will be provided to A/E.
3. Drawings shall adhere to DISTRICT Standard Pen Weights and be compatible for plotting on DISTRICT PCP, PC2, or CTB files.
4. Colors assigned to layers in the DISTRICT CAD manual are suggestions and can be changed as appropriate for individual drawings.
5. All reference files and fonts shall be included in the final deliverable CD-ROM.
6. An index of all files and drawings shall be provided in MS Word format, also to be included in the final deliverable CD-ROM. ***The deliverable CD-ROM shall be clearly labeled to indicate the project name, Consultant's name and address and date of delivery.***
7. File names shall conform to the conventions found in the AIA "CAD Layer Guidelines-second edition."
8. All as-built drawings shall be completed in AutoCAD.
9. Consultants shall submit for approval, all fonts intended for use on project documents, prior to commencement of work. Upon receipt of approval, consultants shall electronically provide approved fonts to the district.
10. "Deliverables" shall be two (2) full sets of all drawings and documents, including specifications, on CD-ROM. All files shall be fully readable and editable (CD-ROMS shall be high quality CD-R type discs ***and clearly labeled to reference the site name, project name, DSA application # & date, Consultant's name and address and submission date***). ***See exhibits 'A' & 'B' for specific labeling requirements.*** CD ROM submissions shall be made at completion of the bid set and again for the final "As-Built Set". Each of these submissions shall be a minimum of two (2) full sets (*one set vellum and one set bond paper*).
11. All submission shall be free of program errors. Submissions shall not require specialized programs such as Lisp Routines and/or 3rd party software. All files submitted shall be fully functional from within AutoCAD 2005.

Non-compliance of any or all items noted may require the Consultant to provide new or corrected submittals.

DRAFTING STANDARDS

This Chapter is not a “how-to” operate the CAD System, but is meant to be a guide for standardization of the drawings produced for The San Diego Community College District. These guidelines are intended to facilitate the use and manipulation of CAD files across multiple users from design phase to on going facilities management.

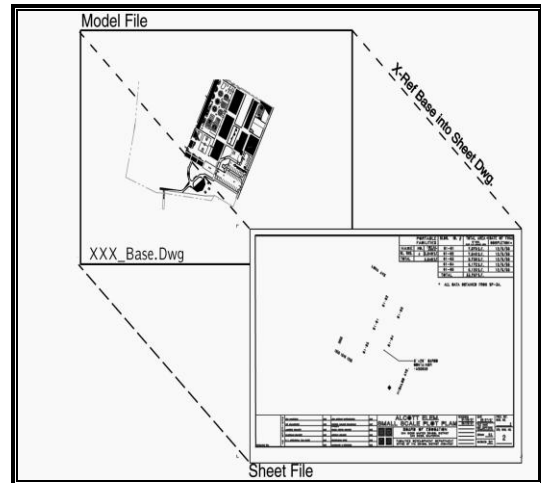
The San Diego Community College District has adopted the guidelines set forth in the AIA’s “CAD Layer Guideline- second edition.” The information listed below borrows heavily from this publication. If further clarification is needed, please obtain a copy of this publication

BASIC ORGANIZATION CONCEPTS

The AIA Layer Guidelines differentiate between two types of CAD files- Model Files and Sheet Files.

Model files contain plans, elevations, sections, and details. They are always drawn in Model Space and are generally used in multiple sheet files.

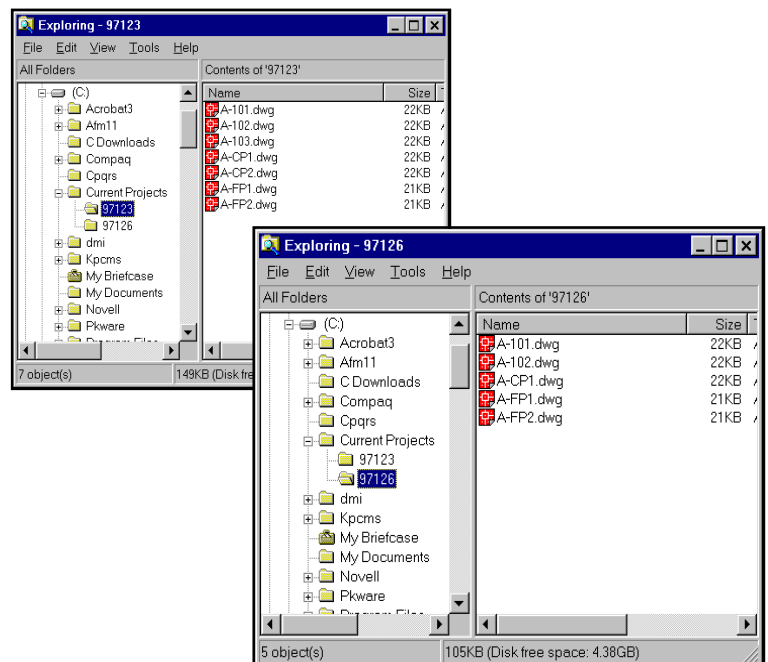
Sheet files contain one or more scaled views of various models files arranged in viewports. Sheet files contain The San Diego Community College District standard title blocks, scale, and site orientation information. **Sheet File Drawings are always plotted at a scale of 1:1. They contain Title blocks that are inserted into PAPERSPACE at 0,0,0 coordinates.**



Model File X-Ref to Sheet File (Figure-1)

FILE NAMES AND PROJECT REFERENCES

Many consultants have long used the practice of incorporating project codes in their file names. For example, 97126A1 might represent project 97126, sheet A1. Although this practice has benefits in a traditional architecture or engineering practice, it is problematic in an environment in which CAD information is exchanged between consultants and where CAD files become the graphic database for ongoing facility management. When files are used as reference files, their names become “hardwired” in the layer and file settings. When the project progresses to another stage, such as a later remodeling, it is extremely difficult to revise these references. In such a case, a base drawing for a remodeling project might contain references to a variety of historical project numbers.

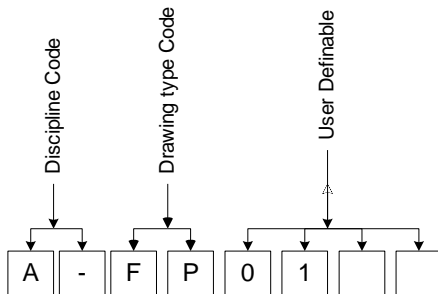


Sample Project Reference Folders (Figure-2)

In order to avoid embedding project specific references within CAD drawing file names, project designations should not be included in file names. Instead, directories or folders should be used to separate and identify projects. A sample directory structure is shown in Figure-2.

GUIDELINES FOR NAMING FILES

Different naming guidelines are defined for both Model and Sheet drawings; however, both Model and Sheet Drawings begin with a Discipline Code. Model file names start with the Discipline Code, followed by a two-letter Drawing Type Code, and finally a user-definable field. For example, **A-FP1** for architectural, floor plan, first floor.



Model File Naming (Figure-3)

Guidelines for Model File Names

Discipline Codes

A	Architectural
C	Civil
E	Electrical
F	Fire protection
G	General
H	Hazardous materials
I	Interiors
L	Landscape
M	Mechanical
P	Plumbing
Q	Equipment
R	Resource
S	Structural
T	Telecommunications
X	Other disciplines
Z	Contractor/shop drawings
AG	Architectural graphics
QK	Kitchen Equipment
QV	QV Audiovisual equipment

Drawing Type Codes that Apply to All Disciplines

*-FP	Floor plan
*-SP	Site plan
*-DP	Demolition plan
*-QP	Equipment plan
*-XP	Existing plan
*-EL	Elevation
*-SC	Section
-DT	Detail
*-SH	Schedules

- *-3D Isometric/3D
- *-DG Diagrams

Drawing Type Code Specific to Particular Disciplines

Architectural

- A-CP Ceiling plans
- A-EP Enlarged plans
- A-NP Finish plans
- A-RP Furniture plans

Civil

- C-EP Environmental
- C-GP Grading
- C-RP Roads/topographic
- C-SV Survey
- C-UP Utility

Electrical

- E-CP Communications
- E-GP Grounding
- E-LP Lighting
- E-PP Power

Fire Protection

- *-VP Evacuation plan (may be by other discipline)
- F-KP Sprinkler plan

Interiors

- I-CP Ceiling plans
- I-EP Enlarged plans
- I-RP Furniture plans
- I-NP Finish plans

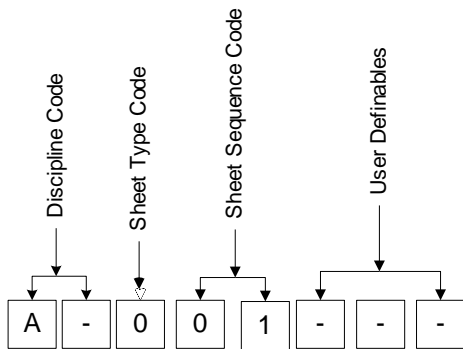
Mechanical

- M-CP Control Plan
- M-HP HVAC ductwork plans
- M-PP Piping plans

Guidelines for Sheet File Names

Sheet file guidelines have been developed by the Uniform Drawing Systems Task Team of the Construction Specifications Institute (CSI). Please refer to the Uniform Drawing System publication from CSI for more information.

Sheet file names start with the *Discipline Code*, *Sheet Type Code*, and a *Sheet Sequence Identifier*, followed by a *User-definable* numerical field that closely corresponds to the Sheet Sequence number. For example, **A-101** for architectural, floor plans, first floor.



Sheet File Naming (Figure-4)

Discipline Codes

- A Architectural
- C Civil
- E Electrical
- F Fire protection*
- G General
- H Hazardous materials
- I Interiors
- L Landscape
- M Mechanical
- P Plumbing
- Q Equipment
- R Resource
- S Structural
- T Telecommunications
- X Other disciplines
- Z Contractor/shop drawings
- AG Architectural graphics
- QK Kitchen Equipment
- QV QV Audiovisual equipment

Sheet Type Codes (Designators)

- 0 General (symbols, legend, notes, etc.)
- 1 Plans (horizontal views)
- 2 Elevations (vertical views)
- 3 Sections (sectional views)
- 4 Large scale (plans, elevations, or sections that are not details)
- 5 Details
- 6 Schedules and diagrams
- 7 User defined
- 8 User defined
- 9 3D views (isometrics, perspectives, photographs)

Sheet Sequence Numbers

Sheet number should be designated sequentially starting at "01" and continuing through "99."

Examples

The following are sample sheet file names:

- A-101.dwg**-Architectural, 1st floor plan, sheet #. A-101
- A-102.dwg**-Architectural, 2nd floor plan, sheet # A-102
- A-103.dwg**-Architectural, 1st floor reflected ceiling plan, sheet # A-103
- A-104.dwg**-Architectural, 1st floor reflected ceiling plan, sheet # A-104
- A-201.dwg**-Architectural, elevations, sheet # A-201
- A-501.dwg**-Architectural details, sheet # A-501

COLOR & PEN ASSIGNMENTS

Each layer is assigned a particular screen color. Those screen colors are associated with the line weights used on the finished hard-copy document. The San Diego Community College District utilizes a Standard Pen Weight file available in AutoCAD PCP or CTB file formats (see Table-1).

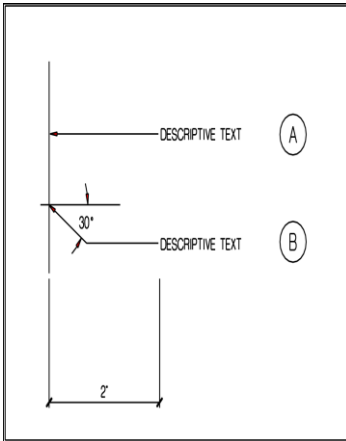
While color assignments are suggested, **the use of The San Diego Community College District pen weights are mandatory.** This insures plot consistency across a multitude of users. **Halftones or screening** maybe assigned to colors 250-255 only.

The San Diego Community College District Pen Weight Table

Color	Weight (inches)	Color	Weight (inches)	Color	Weight (inches)	Color	Weight (inches)	Color	Weight (inches)	Color	Weight (inches)
1	0.015	51	<u>0.01</u>	101	<u>0.01</u>	151	<u>0.01</u>	201	<u>0.01</u>	251	0.001667
2	0.02	52	<u>0.008</u>	102	<u>0.02</u>	152	<u>0.02</u>	202	<u>0.02</u>	252	0.001667
3	0.04	53	<u>0.03</u>	103	<u>0.03</u>	153	<u>0.03</u>	203	<u>0.03</u>	253	0.001667
4	0.03	54	<u>0.04</u>	104	<u>0.04</u>	154	<u>0.04</u>	204	<u>0.04</u>	254	0.001667
5	0.005	55	<u>0.05</u>	105	<u>0.05</u>	155	<u>0.05</u>	205	<u>0.05</u>		
6	0.01	56	<u>0.01</u>	106	0.008	156	0.006	206	0.008		
7	0.02	57	0.01	107	0.008	157	0.006	207	0.004		
8	0.01	58	0.01	108	0.008	158	0.006	208	0.004		
9	0.003	59	0.01	109	0.008	159	0.006	209	0.004		
10	0.007	60	0.025	110	0.008	160	0.006	210	0.004		
11	0.01	61	0.01	111	0.008	161	0.006	211	0.004		
12	0.006	62	0.02	112	0.008	162	0.006	212	0.004		
13	0.01	63	0.01	113	0.008	163	0.006	213	0.004		
14	0.012	64	0.01	114	0.008	164	0.006	214	0.004		
15	0.015	65	0.01	115	0.008	165	0.006	215	0.004		
16	0.01	66	0.01	116	0.008	166	0.006	216	0.004		
17	0.01	67	0.01	117	0.008	167	0.006	217	0.001667		
18	0.01	68	0.01	118	0.008	168	0.006	218	0.001667		
19	0.01	69	0.01	119	0.008	169	0.006	219	0.001667		
20	0.01	70	0.01	120	0.008	170	0.006	220	0.001667		
21	0.01	71	0.01	121	0.008	171	0.01	221	0.001667		
22	0.015	72	0.01	122	0.008	172	0.006	222	0.001667		
23	0.01	73	0.01	123	0.008	173	0.006	223	0.001667		
24	0.01	74	0.01	124	0.008	174	0.006	224	0.001667		
25	0.01	75	0.01	125	0.008	175	0.006	225	0.001667		
26	0.01	76	0.01	126	0.008	176	0.006	226	0.001667		
27	0.01	77	0.01	127	0.008	177	0.006	227	0.001667		
28	0.01	78	0.01	128	0.008	178	0.006	228	0.001667		
29	0.01	79	0.01	129	0.008	179	0.006	229	0.001667		
30	0.01	80	0.01	130	0.008	180	0.006	230	0.008		
31	0.005	81	0.008	131	0.008	181	0.006	231	0.001667		
32	0.005	82	0.015	132	0.008	182	0.006	232	0.001667		
33	0.01	83	0.008	133	0.008	183	0.006	233	0.001667		
34	0.01	84	0.008	134	0.008	184	0.006	234	0.001667		
35	0.01	85	0.008	135	0.008	185	0.006	235	0.001667		
36	0.01	86	0.008	136	0.008	186	0.006	236	0.001667		
37	0.01	87	0.008	137	0.008	187	0.006	237	0.001667		
38	0.01	88	0.008	138	0.008	188	0.006	238	0.001667		
39	0.01	89	0.008	139	0.006	189	0.006	239	0.001667		
40	0.015	90	0.008	140	0.006	190	0.008	240	0.008		
41	0.01	91	0.008	141	0.006	191	0.006	241	0.001667		
42	0.025	92	0.008	142	0.006	192	0.006	242	0.001667		
43	0.01	93	0.008	143	0.006	193	0.004	243	0.001667		
44	0.01	94	0.008	144	0.006	194	0.004	244	0.001667		
45	0.01	95	0.008	145	0.006	195	0.004	245	0.001667		
46	0.01	96	0.008	146	0.006	196	0.004	246	0.001667		
47	0.01	97	0.008	147	0.006	197	0.004	247	0.001667		
48	0.01	98	0.008	148	0.006	198	0.004	248	0.001667		
49	0.01	99	0.008	149	0.006	199	0.004	249	0.001667		
50	0.01	100	0.008	150	0.006	200	0.004	250	0.001667		

Pen Weights (inches) Table- 1

Leaders



Leaders (Figure-5)

As shown in Figure-6, the most preferred leader is evidenced in Example "A," where the leader is directly across from the object being called out. The leader length should be no more than two inches long when it is plotted.

If it is impractical to locate the leader directly alongside the object being called out, Example "B" applies, where the leader would be a simple jog, which connects from the material being called out to the descriptive text. The leader must be initially drawn as a two-part leader line, where the first line segment departs from the object at a thirty (30) degree angle off the horizontal. The last segment should be aligned horizontally with the midpoint of the call-out.

LAYER NAMING GUIDELINES

LAYER NAME FORMAT

The San Diego Community College District has adopted layering standards based on the AIA's "CAD LAYER GUIDELINES – second edition."

The goal of our layering system is:

- To create a uniformity of documentation and information between drawings and disciplines.
- To allow several drawings sharing common information to be combined in one CAD file to reduce drawing effort and improve consistency.
- To control appearance characteristics such as color or line type.

The Layer Names are organized as a hierarchy as shown in Figure-6. This structure makes the list easier to use and accommodates future expansion. Layer names are divided into four parts as listed on the following page.

Discipline Code

The discipline code is a two-character field with the second character either a hyphen or a user-defined modifier. The defined discipline codes are the same for both layers and file names. For example, the File A-FP01.dwg might contain layers A-WALL, A-DOOR, AND A-CLNG.

Major Group

The major group designation identifies the building system. Although major groups are logically grouped with specific discipline codes, it is possible to combine major group codes with any of the discipline codes. For example, a drawing might contain the following layers:

A-WALL	WALLS
A-DOOR	DOORS
A-LITE	LIGHTING FIXTURES
A-FIXT	PLUMBING FIXTURES

Minor Group

This is an optional, four-character field for further differentiation of major groups. For example, A-WALL-PART indicates architecture, new, wall, partial height. The following common modifiers are defined for use in the minor group field:

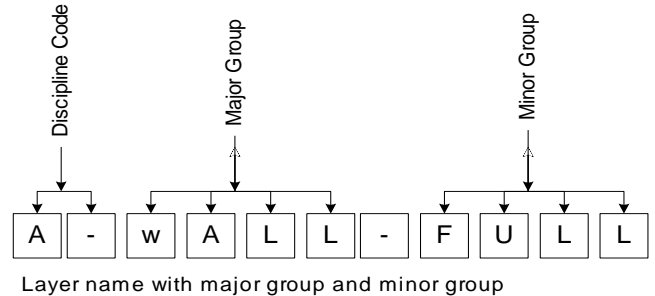
IDEN	Identification
PATT	Pattern

Status Field

The status field is a four-character designator that differentiates new construction from remodeling and existing to remain. It is only needed when phases of work must be differentiated. Defined values for this field area as follows

Neww	New Work
EXST	Existing to remain
DEMO	Existing to demolish
FUTR	Future work
TEMP	Temporary work
MOVE	Items to be moved
RELO	Relocated items
NICN	Not in contract
PHS1-9	Phase numbers

The status field is optional and is only needed when phases of work need to be differentiated. A drawing may differentiate new construction with layer names containing NEWW in the status fields. Other layers do not have a status field and therefore can be differentiated from the new construction layers



Layer Naming Format (Figure-6)

Viewport Scaling

The following table is meant as a quick reference guide to scaling viewports.

Architectural Scale	Scale Factor	Viewport Scale	ENGINEERING Scale	Scale Factor	Viewport Scale
3" = 1'-0"	4	.25XP	1" = 10'-0"	120	.008333XP
1 1/2" = 1'-0"	8	.125XP	1" = 20'-0"	240	.004166XP
1" = 1'-0"	12	.0833XP	1" = 30'-0"	360	.002777XP
3/4" = 1'-0"	16	.0625XP	1" = 40'-0"	480	.0020833XP
1/2" = 1'-0"	24	.041666XP	1" = 50'-0"	600	.0016666XP
3/8" = 1'-0"	32	.03125XP	1" = 60'-0"	720	.0013888XP
1/4" = 1'-0"	48	.02083XP	1" = 100'-0"	1200	.0008333XP
3/16" = 1'-0"	64	.015625XP	1" = 200'-0"	2400	.0004166XP
1/8" = 1'-0"	96	.0104166XP	1" = 400'-0"	4800	.0002083XP
3/32" = 1'-0"	128	.0078125XP			
1/16" = 1'-0"	192	.0058333XP			
1/32" = 1'-0"	384	.002604XP			

Table- 2 View Port Scaling

Text Scaling and Circles

When entering text, the text height must be adjusted for the anticipated plot scale. The following table details the text height for the various plot scales:

Viewport Scale x=1'-0"	Text Height in	Text size when scaled in Layout view				1/4" Circle Radius in Layout View
		3/32"	1/8"	3/16"	1/4"	
1'-0"=3"	Model space dimension =	3/8"	1/2"	3/4"	1"	1"
1'-0"=1 1/2"	Model space dimension =	3/4"	1"	1 1/2"	2"	2"
1'-0"=1"	Model space dimension =	1 1/8"	1 1/2"	2 1/4"	3"	3"
1'-0"=3/4"	Model space dimension =	1 1/2"	2"	3"	4"	4"
1'-0"=1/2"	Model space dimension =	2 1/4"	3"	4 1/2"	6"	6"
1'-0"=3/8"	Model space dimension =	3"	4"	6"	8"	8"
1'-0"=1/4"	Model space dimension =	4 1/2"	6"	9"	1'-0"	1'-0"
1'-0"=3/16"	Model space dimension =	6"	8"	1'-0"	1'-4"	1'-4"
1'-0"=1/8"	Model space dimension =	9"	1'-0"	1'-6"	2'-0"	2'-0"
1'-0"=3/32"	Model space dimension =	1'-0"	1'-4"	2'-0"	2'-8"	2'-8"
1'-0"=1/16"	Model space dimension =	1'-6"	2'-0"	3'-0"	4'-0"	4'-0"
1'-0"=1/32"	Model space dimension =	3'-0"	4'-0"	4'-0"	8'-0"	8'-0"

Table- 3 Text Heights

Text Format

The District Standard Fonts have changed over the years. For that reason “legacy” fonts have been maintained as new fonts have been added. The current standard font for Text Style “Text-01” is the “architxt.shx” font. Similarly, the font for the style “Title-01” is “archititl.shx”.

Font widths for Text-01 is .75 and .85 for Title-01. Text height should be determined by the drafting technician. When developing a set of documents, the technician should determine a text height that will be clear, legible and consistent across the entire set of documents.

Title-01 style should not be used when the height chosen for the documents is so great that the double stroke of the archititl.shx font is viewable.

Ltscale, Visretain, Units

All District Standard drawings shall have the “ltscale” set to 1 and the “Visretain” set to 1.

Units shall be set to Architectural, inches, Decimal Degrees, the Base Angle set to “E” and rotation should be “counterclockwise”. **All drawings shall be set to 1 unit equals 1 inch.**

DISTRICT CONTACTS

This document is updated from time to time as issues arise and are subsequently addressed. To keep informed and up to date, contact Lance Lareau SDCCD District Architect by e-mail at llareau@sdccd.edu or Ramon Fonseca Architectural Department at rfonseca@sdccd.edu for the latest revision.

DISTRICT STANDARD LAYERS

Civil Engineering and Site Work

LAYER NAME	LAYER DESCRIPTION	LAYER	COLOR
Building Information Layers			
C-AREA	Polyline	6	Magenta
C-PROP	Property Lines and Survey Benchmarks	4	CYAN
C-PROP-ESMT	Easement, Right-of-Ways, and Setbacks	2	YELLOW
C-PROP-BRNG	Bearings and Distance Labels	6	MAGENTA
C-PROP-CONS	Construction Controls	2	YELLOW
C-TOPO	Proposed Contour Lines and Elevations	1	RED
C-TOPO-EXST	Existing Contour Lines and Elevations to Remain	10	DK. RED
C-TOPO-DEMO	Existing Contour Lines and Elevations to be Changed (Linetype to be Hidden)	140	SKY BLUE
C-TOPO-SPOT	Spot Elevations	6	MAGENTA
C-TOPO-BORE	Test Borings	1	RED
C-TOPO-RTWL	Retaining Wall	2	YELLOW
Building Footprint			
C-BLDG	Building Footprint	2	YELLOW
C-BLDG-EXST	Footprints of Existing Buildings to Remain	2	YELLOW
C-BLDG-PROP	Proposed building footprint	11	TAN
C-BLDG-DEMO	Footprints of Existing Buildings to be Demolished (Linetype to be Hidden)	2	YELLOW
Parking Lot			
C-PKNG	Parking Lot	11	TAN
C-PKNG-STRP	Parking Lot Striping and Handicap Striping	93	DK. GREEN
C-PKNG-PROP	Proposed Parking Lot Striping	93	DK. GREEN
C-PKNG-CARS	Graphic Illustration of Cars	40	YEL.-ORANGE
C-PKNG-ISLD	Parking Islands	10	DK. RED
C-PKNG-EXST	Existing Parking Lots to Remain	11	TAN
C-PKNG-DEMO	Existing Parking Lots to be Demolished (Linetype to be Hidden)	11	TAN
C-PKNG-DRAN	Parking Lot Drainage Slope Indications	6	MAGENTA
C-PKNG-TEXT	All text relating to parking	93	DK. GREEN
C-PKNG-PATT	Hatch for asphalt paving	5	BLUE
Roads			
C-ROAD	Roads	1	RED
C-ROAD-CNTR	Center Lines	2	YELLOW
C-ROAD-CURB	Curbs	1	RED
C-ROAD-EXST	Existing Roads to Remain	1	RED

Civil Engineering and Site Work (continued)

LAYER NAME	LAYER DESCRIPTION	LAYER	COLOR
C-ROAD-DEMO	Existing Roads to be Demolished (Linetype to be Hidden)	1	RED
C-STRM	Storm Drainage Catchbasins and Manholes	10	DK. RED
C-STRM-UNDR	Storm Drainage Pipe (Underground) (Linetype to be Hidden)	140	LT. BLUE
C-STRM-TEXT	Storm Text	6	MAGENTA
C-ECTR	Site Electrical Substations and Poles	2	YELLOW
C-ECTR-LITE	Site Lighting	1	RED
C-ECTR-UNDR	Underground Electrical Lines (Linetype to be Hidden)	1	RED
C-ECTR-POLE	Electric Poles	2	YELLOW
C-ECTR-OVHD	Overhead Lines	1	RED
C-COMM	Site Communication (Telephone Poles, Boxes, Towers)	1	RED
C-COMM-UNDR	Underground Communication Lines (Linetype to be Hidden)	1	RED
C-COMM-OVHD	Overhead Communication Lines	1	RED
C-WATR	Domestic Water (Manholes, Plumbing Stations, Storage Tanks)	11	TAN
C-WATR-UNDR	Domestic Water (Underground Lines) (Linetype to be Hidden)	11	TAN
C-WATR-TEXT	Domestic Water Text	6	MAGENTA
C-FIRE	Fire Protection Hydrants and Connections	11	DK. RED
C-FIRE-UNDR	Fire Protection (Underground Lines) (Linetype to be Hidden)	1	RED
C-FIRE-TEXT	Fire Protection Text	6	MAGENTA
C-FIRE-LANE	Fire Lane	60	YEL.-GREEN
C-NGAS	Natural Gas Manholes, Meters, and Storage Tanks	13	GREY
C-NGAS-UNDR	Natural Gas (Underground Lines) (Linetype to be Hidden)	13	GREY
C-NGAS-TEXT	Natural Gas Text	6	MAGENTA

Civil Engineering and Site Work (continued)

LAYER NAME	LAYER DESCRIPTION	LAYER	COLOR
C-UTIL-TEXT	Utility notes	6	MAGENTA
C-SSWR	Sanitary Sewer (Manholes, Pumping Stations)	1	RED
C-SSWR-UNDR	Sanitary Sewer (Underground Lines) (Linetype to be Hidden)	140	LT. BLUE
C-SSWR-TEXT	Sanitary Sewer Text	6	MAGENTA
C-ELEV	Elevations	11	DK. RED
C-ELEV-OTLN	Building Outlines	2	YELLOW
C-ELEV-PATT	Textures and Hatch Patterns	10	DK. RED
C-ELEV-IDEN	Identification Numbers	6	MAGENTA
C-SECT	Sections	1	RED
C-SECT-MCUT	Material Cut by Section	2	YELLOW
C-SECT-MBND	Material beyond Section Cut	52	AVOCADO
C-SECT-PATT	Textures and Hatch Patterns	10	DK. RED
C-SECT-IDEN	Identification Numbers	6	MAGENTA
C-DETL	Sections	1	RED
C-DETL-MCUT	Material Cut by Section	2	YELLOW
C-DETL-MBND	Material beyond Section Cut	52	AVOCADO
C-DETL-PATT	Textures and Hatch Patterns	3	GREEN
C-DETL-IDEN	Identification Numbers	6	MAGENTA
	Drawing Information Layers		
C-SHBD	Sheet Border and Title Block Line Work	4	CYAN
0C-SHBD-TTLB	Project Title block Information	6	MAGENTA
C-SHBD-TEXT	Title block Text Information	6	MAGENTA
C-SHBD-NP	Sheet Border Non-print Area and Grid Lines	1	RED
C-SHBD-RG	Sheet Border Registration Marks	13	GREY
C-PSIT	Site Plan	1	RED
C-PELC	Site Electrical Systems Plan	1	RED
C-PUTL	Site Utility Plan	1	RED

Civil Engineering and Site Work (continued)

LAYER NAME	LAYER DESCRIPTION	LAYER	COLOR
C-PGRD	Grading Plan	1	RED
C-PPAV	Paving Plan	1	RED
C-P***	Other Mechanical Plans	1	RED
C-SCHD	Schedules and Title Block Sheets	6	MAGENTA
C-****-NOTE	Notes, Call-outs, and Key Notes	6	MAGENTA
C-****-TEXT	General Notes and Specifications	6	MAGENTA
C-****-SYMB	Symbols, Bubbles, and Targets	11	TAN
C-****-DIMS	Dimensions	13	GREY
C-****-PATT	Cross-hatching and Poche	10	DK. GREEN

Architecture, Interiors, and Facilities

LAYER NAME	LAYER DESCRIPTION	LAYER	COLOR
Building Information Layers			
A-WALL	WALLS	2	YELLOW
A-WALL-FULL	Full Height walls, Stair and Shaft Walls, and Walls to Structure	2	YELLOW
A-WALL-FULL-EXST	Existing Full Height Walls	2	YELLOW
A-WALL-FULL-NEW	New Full Height Walls	2	YELLOW
A-WALL-PRHT	Partial Height Walls (Not on Reflected Ceiling Plans)	1	RED
A-WALL-MOVE	Movable Partitions	11	TAN
A-WALL-HEAD	Door and Window Headers (Shown on Reflected Ceiling Plans)	2	YELLOW
A-WALL-JAMB	Door and Window Jambs (Not on Reflected Ceiling Plans)	2	YELLOW
A-WALL-PATT	Wall Insulation, Hatching, and Fill	3	GREEN
A-WALL-ELEV	Wall Surfaces (3D Views)	2	YELLOW
A-WALL-DEMO	Existing wall to be demo'd (Linetype is to be Hidden)	1	RED
A-DOOR	DOORS	11	TAN
A-DOOR-SWNG	Door Swing	5	BLUE
A-DOOR-IDEN	Door Number, Hardware Group, etc..	6	MAGENTA
A-DOOR-ELEV	Doors (3D Views)	11	TAN
A-GLAZ	Windows, Window Walls, Curtain Walls, Glazed Partitions	11	TAN

Architecture, Interiors, and Facilities (continued)

LAYER NAME	LAYER DESCRIPTION	LAYER	COLOR
A-GLAZ-FULL	Full Height Glazed Walls and Partitions	11	TAN
A-GLAZ-PRHT	Windows and Partial Height Glazed Partitions	11	TAN
A-GLAZ-SILL	Window Sills	20	RED-ORANGE
A-GLAZ-IDEN	Window Identification	6	MAGENTA
A-GLAZ-ELEV	Glazing and Mullions (Elevation Views)	11	TAN
A-FLOR	Floor Information	6	MAGENTA
A-FLOR-OTLN	Floor or Building Outline	2	YELLOW
A-FLOR-LEVL	Level Changes, Ramps, Pits, and Depressions	2	YELLOW
A-FLOR-STRS	Stair Treads, Escalators, and Ladders	1	RED
A-FLOR-RISR	Stair Risers	1	RED
A-FLOR-HRAL	Stair and Balcony Handrails and Guard Rails	1	RED
A-FLOR-EVTR	Elevator Cars and Equipment	1	RED
A-FLOR-TPTN	Toilet Partitions	52	AVOCADO
A-FLOR-SPCL	Architectural Specialties (Toilet Room Accessories, Display Cases)	52	AVOCADO
A-FLOR-WDWK	Architectural Woodwork (Field-Built Cabinets and Counters)	34	DK. ORANGE
A-FLOR-CASE	Casework (Manufactured Cabinets)	83	TEAL
A-FLOR-APPL	Appliances	52	AVOCADO
A-FLOR-OVHD	Overhead Skylights and Overhangs (Usually Dashed Lines)	12	DK. RED
A-FLOR-RAIS	Raised Floors	2	YELLOW
A-FLOR-IDEN	Room Numbers, Names, Targets, etc..	6	MAGENTA
A-FLOR-PATT	Paving, Tile, and Carpet Patterns	5	BLUE
A-RAMP-PROP	Proposed site ramps, temporary & permanent	10	DK. RED
A-RAMP-TEXT	Directional symbols, arrows & text	5	BLUE
A-EQPM	Equipment	52	AVOCADO
A-EQPM-FIXD	Fixed Equipment	52	AVOCADO
A-EQPM-MOVE	Movable Equipment	22	BROWN
A-EQPM-NICN	Equipment Not in Contract	5	BLUE
A-EQPM-ACCS	Equipment Access	1	RED
A-EQPM-IDEN	Equipment Identification Numbers	6	MAGENTA
A-EQPM-ELEV	Equipment Surfaces (3D Views)	52	AVOCADO

Architecture, Interiors, and Facilities (continued)

LAYER NAME	LAYER DESCRIPTION	LAYER	COLOR
A-FURN	Furniture	171	LAVENDER
A-FURN-PNLS	Furniture System Panels	171	LAVENDER
A-FURN-POWR	Furniture System Power Designations	171	LAVENDER
A-FURN-IDEN	Furniture Numbers	6	MAGENTA
A-FURN-PATT	Finish Patterns	20	RED-ORANGE
A-FURN-ELEV	Furniture (3D Views)	171	LAVENDER
A-CLNG	Ceiling Information	190	PURPLE
A-CLNG-GRID	Ceiling Grid	190	PURPLE
A-CLNG-OPEN	Ceiling and Roof Penetrations	1	RED
A-CLNG-SUSP	Suspended Elements	190	PURPLE
A-CLNG-PATT	Ceiling Patterns	20	RED-ORANGE
A-ROOF	Roof	11	TAN
A-ROOF-OTLN	Roof Outline	11	TAN
A-ROOF-LEVL	Level Changes	2	YELLOW
A-ROOF-STRS	Stair Treads, Escalators, and Ladders	1	RED
A-ROOF-RISR	Stair Risers	1	RED
A-ROOF-HRAL	Stair and Balcony Handrails and Guard Rails	1	RED
A-ROOF-PATT	Roof Surface Patterns (Hatching)	5	BLUE
A-ROOF-ELEV	Roof Surfaces (3D Views)	11	TAN
A-ROOF-FABR	Roof fabric (shade structure)	30	ORANGE
A-AREA	Area Calculations Boundary Lines	6	MAGENTA
A-AREA-PATT	Area Cross-Hatching	3	GREEN
A-AREA-IDEN	Room No., Tenant ID, and Area Calculations	6	MAGENTA
A-AREA-OCCP	Occupant or Employee Names	6	MAGENTA
A-ELEV	Interior and Exterior Elevations	11	DK. RED
A-ELEV-OTLN	Building Outlines	7	WHITE
A-ELEV-FNSH	Finishes, Woodwork, and Trim	5	BLUE
A-ELEV-CASE	Wall-mounted Casework	22	BROWN
A-ELEV-FIXT	Miscellaneous Fixtures	1	RED
A-ELEV-SIGN	Signage	1	RED

Architecture, Interiors, and Facilities (continued)

LAYER NAME	LAYER DESCRIPTION	LAYER	COLOR
A-ELEV-PATT	Textures and Hatch Patterns	5	BLUE
A-ELEV-IDEN	Component Identification Numbers	6	MAGENTA
A-SECT	Sections	11	TAN
A-SECT-MCUT	Material Cut by Section	2	YELLOW
A-SECT-MBND	Material Beyond Section Cut	52	AVOCADO
A-SECT-PATT	Textures and Hatch Patterns	10	DK. RED
A-SECT-IDEN	Components Identification Numbers	6	MAGENTA
A-DETL	Details	11	TAN
A-DETL-MCUT	Material Cut by Section	11	TAN
A-DETL-MBND	Material Beyond Section Cut	52	AVOCADO
A-DETL-PATT	Textures and Hatch Patterns	3	GREEN
A-DETL-IDEN	Components Identification Numbers	6	MAGENTA
A-DETL-NP	Guideline and Delimiters	6	MAGENTA
Drawing Information Layers			
A-SHBD	Sheet Border and Title Block Line Work	1	RED
A-SHBD-TTLB	Project Title block Information	1	RED
A-SHBD-SIGN	Digitized Signature	22	YELL.-ORANGE
A-SHBD-TEXT	Title block Text Information	6	MAGENTA
A-SHBD-NP	Sheet Border Non-print Area and Grid Lines	5	BLUE
A-SHBD-RG	Sheet Border Registration Marks	13	DK . RED
A-LOGO	Office or Project Logo	2	YELLOW
A-LOGO-LPAT	Office or Project Logo Large Hatch	1	RED
A-LOGO-SPAT	Office or Project Logo Small Hatch	10	DK. RED
A-PFLR	Floor Plan	1	RED
A-PLGS	Large Scale Floor Plan	1	RED
A-PCLG	Reflected Ceiling Plan	1	RED
A-PROF	Roof Plan	1	RED
A-PXFU	Fixtures and Furniture Plan	1	RED
A-PEQM	Equipment Plan	1	RED
A-PMFN	Materials and Finish Plan	1	RED
A-PDEM	Demolition Plan	1	RED

Architecture, Interiors, and Facilities (continued)

LAYER NAME	LAYER DESCRIPTION	LAYER	COLOR
A-PARE	Area Calculations	1	RED
A-POCC	Occupancy Plans	1	RED
A-P***	Other Plan Drawings	1	RED
A-SCHD	Schedules and Title Block Sheets	6	MAGENTA
A-****-NOTE	Notes, Call-outs, and Key Notes	6	MAGENTA
A-NOTE	Notes, Call-outs	6	MAGENTA
A-****-TEXT	General Notes and Specifications	6	MAGENTA
A-TEXT	General Notes and Specifications	6	MAGENTA
A-TEXT-UTIL	Utility related non-civil text	6	MAGENTA
A-TEXT-LP	Line painting text	6	MAGENTA
A-MSTR-TEXT	General Notes, etc.	6	MAGENTA
A-TEXT-NP	Text & notes not to print, info box, dates, etc.	6	MAGENTA
A-****-SYMB	Symbols, Bubbles, and Targets	11	TAN
A-SYMB	Symbols, Bubbles, and Targets	11	TAN
A-****-DIMS	Dimensions	10	DK. RED
A-DIMS	Dimensions	10	DK. RED
A-****-PATT	Cross-hatching and Poche	10	DK. RED
A-PATT	Cross-hatching and Poche	10	DK. RED
A-PATH-FIRE	Graphical fire exiting	1	RED
A-PATH-POT	ADA path of travel	40	MUSTARD
A-PATH-EXIT	Other graphical exiting		

Structural

LAYER NAME	LAYER DESCRIPTION	LAYER	COLOR
Building Information Layers			
S-GRID	Column Grid	1	RED
S-GRID-EXTR	Column Grid Outside	1	RED
S-GRID-INTR	Column Grid Interior	1	RED
S-GRID-DIMS	Column Grid Dimensions	13	GREY
S-GRID-IDEN	Column Grid Tags	6	MAGENTA
Foundation			
S-FNDN	Foundation	2	YELLOW
S-FNDN-PILES	Piles and Drilled Piers	2	YELLOW
S-FNDN-RBAR	Foundation Reinforcing	1	RED
Slab			
S-SLAB	Slab	2	YELLOW
S-SLAB-EDGE	Edge of Slab	2	YELLOW
S-SLAB-RBAR	Slab Reinforcing	1	RED
S-SLAB-JOIN	Slab Control Joints	5	BLUE
Anchor Bolts			
S-ABLT	Anchor Bolts	6	MAGENTA
Columns			
S-COLS	Columns	2	YELLOW
Structural Bearing or Shear Walls			
S-WALL	Structural Bearing or Shear Walls	2	YELLOW
Miscellaneous Metal			
S-METL	Miscellaneous Metal	22	BROWN
Framing Plan			
S-FRAM	Framing Plan	1	RED
S-FRAM-BEAM	Beams	1	RED
S-FRAM-JOIS	Joists	1	RED
S-FRAM-DECK	Structural Floor Deck	1	RED
Elevations			
S-ELEV	Elevations	1	RED
S-ELEV-OTLN	Building Outlines	2	YELLOW
S-ELEV-PATT	Textures and Hatch Patterns	5	BLUE
S-ELEV-IDEN	Identification Numbers	6	MAGENTA

Structural (continued)

LAYER NAME	LAYER DESCRIPTION	LAYER	COLOR
S-SECT	Sections	11	TAN
S-SECT-MCUT	Material Cut by Section	2	YELLOW
S-SECT-MBND	Material beyond Section Cut	52	AVOCADO
S-SECT-PATT	Textures and Hatch Patterns	10	DK. RED
S-SECT-IDEN	Identification Numbers	6	MAGENTA
S-DETL	Sections	1	RED
S-DETL-MCUT	Material Cut by Section	2	YELLOW
S-DETL-MBND	Material beyond Section Cut	52	AVOCADO
S-DETL-PATT	Textures and Hatch Patterns	10	DK. RED
S-DETL-IDEN	Identification Numbers	6	MAGENTA
	Drawing Information Layers		
S-SHBD	Sheet Border and Title Block Line Work	4	CYAN
S-SHBD-TTLB	Project Title block Information	6	MAGENTA
S-SHBD-TEXT	Title block Text Information	6	MAGENTA
S-SHBD-NP	Sheet Border Non-print Area and Grid Lines	1	RED
S-SHBD-RG	Sheet Border Registration Marks	13	GREY
S-PFND	Foundation Plan	1	RED
S-PSFR	Structural Framing Plan	1	RED
S-PCOL	Column Plan	1	RED
S-P***	Other Structural Plans	1	RED
S-SCHD	Schedules and Title Block Sheets	6	MAGENTA
S-****-NOTE	Notes, Call-outs, and Key Notes	6	MAGENTA
S-****-TEXT	General Notes and Specifications	6	MAGENTA
S-****-SYMB	Symbols, Bubbles, and Targets	11	TAN
S-****-DIMS	Dimensions	13	GREY
S-****-PATT	Cross-hatching and Poche	10	DK. RED

Mechanical

LAYER NAME	LAYER DESCRIPTION	LAYER	COLOR
Building Information Layers			
M-CHIM	Prefabricated Chimneys	1	RED
M-CMPA	Compressed Air Systems	1	RED
M-CMPA-CEQP	Compressed Air Equipment	1	RED
M-CMPA-CPIP	Compressed Air Piping	1	RED
M-CMPA-PEQP	Process Air Equipment	1	RED
M-CMPA-PPIP	Process Air Piping	1	RED
Controls and Instrumentation			
M-CONT	Controls and Instrumentation	11	TAN
M-CONT-THER	Thermostats	11	TAN
M-CONT-WIRE	Low Voltage Wiring	11	TAN
Dust and Fume Collection System			
M-DUST	Dust and Fume Collection System	11	TAN
M-DUST-EQPM	Dust and Fume Collection Equipment	11	TAN
M-DUST-DUCT	Dust and Fume Ductwork	22	BROWN
Electric Heat Equipment			
M-ELHT-EQMP	Electric Heat Equipment	1	RED
Energy Management System			
M-ENER	Energy Management System	1	RED
M-ENER-EQPM	Energy Management Equipment	1	RED
M-ENER-WIRE	Energy Management Wiring	1	RED
Exhaust System			
M-EXHS	Exhaust System	13	GREY
M-EXHS-EQPM	Exhaust System Equipment	13	GREY
M-EXHS-DUCT	Exhaust System Ductwork	13	GREY
M-EXHS-RFEQ	Rooftop Exhaust Equipment	13	GREY
Fuel System Piping			
M-FUEL	Fuel System Piping	13	GREY
M-FUEL-GPRP	Fuel Gas Process Piping	13	GREY
M-FUEL-GGEP	Fuel Gas General Piping	11	TAN
M-FUEL-OPRP	Fuel Oil Process Piping	13	GREY
M-FUEL-OGEP	Fuel Oil General Piping	11	TAN

Mechanical (continued)

LAYER NAME	LAYER DESCRIPTION	LAYER	COLOR
M-GAS	Gas Piping	13	GREY
M-GAS-LP	Low pressure Piping	13	GREY
M-GAS-HP	High pressure Piping	11	TAN
M-GAS-FIRM	Firm Gas Piping	13	GREY
M-GAS-IRR	Intermittent Gas Piping	11	TAN
M-HVAC	HVAC System	1	RED
M-HVAC-CDFF	HVAC Ceiling Diffusers	1	RED
M-HVAC-ODFF	HVAC Other Diffusers	1	RED
M-HVAC-DUCT	HVAC Ductwork	1	RED
M-HVAC-EQPM	HVAC Equipment	230	PINK
M-HOTW	Hot Water Heating System	6	MAGENTA
M-HOTW-EQPM	Hot Water Equipment	6	MAGENTA
M-HOTW-PIPE	Hot Water Piping	6	MAGENTA
M-HOTW-RTN	Hot Water Return Piping	6	MAGENTA
M-CWTR	Chilled Water Systems	13	GREY
M-CWTR-PIPE	Chilled Water Piping	13	GREY
M-CWTR-EQPM	Chilled Water Equipment	13	GREY
M-MACH	Machine Shop Equipment	1	RED
M-REFG	Refrigeration Systems	13	GREY
M-REFG-EQPM	Refrigeration Equipment	13	GREY
M-REFG-PIPE	Refrigeration Piping	13	GREY
M-SPCL	Special Systems	1	RED
M-SPCL-EQPM	Special Systems Equipment	1	RED
M-SPCL-PIPE	Special Systems Piping	1	RED

Mechanical (continued)

LAYER NAME	LAYER DESCRIPTION	LAYER	COLOR
M-STEM	Steam Systems	6	MAGENTA
M-STEM-CONP	Steam Systems Condensate Piping	6	MAGENTA
M-STEM-EQPM-	Steam Systems Equipment	6	MAGENTA
M-STEM-LPIP	Low Pressure Steam Pipe	6	MAGENTA
M-STEM-HPIP	High Pressure Steam	6	MAGENTA
M-ELEV	Elevations	1	RED
M-ELEV-OTLN	Building Outlines	2	YELLOW
M-ELEV-PATT	Textures and Hatch Patterns	10	DK. RED
M-ELEV-IDEN	Identification Numbers	6	MAGENTA
M-TEST	Test Equipment	1	RED
M-SECT	Sections	1	RED
M-SECT-MCUT	Material Cut by Section	2	YELLOW
M-SECT-MBND	Material beyond Section Cut	52	AVOCADO
M-SECT-PATT	Textures and Hatch Patterns	3	GREEN
M-SECT-IDEN	Identification Numbers	6	MAGENTA
M-DETL	Sections	1	RED
M-DETL-MCUT	Material Cut by Section	2	YELLOW
M-DETL-MBND	Material beyond Section Cut	52	AVOCADO
M-DETL-PATT	Textures and Hatch Patterns	10	DK. RED
M-DETL-IDEN	Identification Numbers	6	MAGENTA
	Drawing Information Layers		
M-SHBD	Sheet Border and Title Block Line Work	4	CYAN
M-SHBD-TTLB	Project Title block Information	6	MAGENTA
M-SHBD-TEXT	Title block Text Information	6	MAGENTA
M-SHBD-NP	Sheet Border Non-print Area and Grid Lines	1	RED
M-SHBD-RG	Sheet Border Registration Marks	13	GREY
M-PPIP	Piping Plan	1	RED

Mechanical (continued)

LAYER NAME	LAYER DESCRIPTION	LAYER	COLOR
M-PDUC	Duct Plan	1	RED
M-PEXD	Exhaust Duct Plan	1	RED
M-PSTM	Steam Piping Plan	1	RED
M-PWCH	Chilled Water Piping Plan	1	RED
M-PMED	Special Medical Process - Piping Plan	1	RED
M-PCON	Controls Plan	1	RED
M-P***	Other Mechanical Plans	1	RED
M-SCHD	Schedules and Title Block Sheets	6	MAGENTA
M-****-NOTE	Notes, Call-outs, and Key Notes	6	MAGENTA
M-****-TEXT	General Notes and Specifications	6	MAGENTA
M-****-SYMB	Symbols, Bubbles, and Targets	11	TAN
M-****-DIMS	Dimensions	13	GREY
M-****-PATT	Cross-hatching and Poche	10	DK. RED

Plumbing

LAYER NAME	LAYER DESCRIPTION	LAYER	COLOR
P-ACID	Acid, Alkaline, and Oil Waste Systems	1	RED
P-ACID-PIPE	Acid, Alkaline, and Oil Waste Systems	1	RED
P-DOMW	Domestic Hot and Cold Water Equipment	1	RED
P-DOMW-EQPM	Domestic Hot and Cold Water Equipment	1	RED
P-DOMW-PIPE	Domestic Hot and Cold Water Piping	1	RED
P-DOMW-RISR	Domestic Hot and Cold Water Risers	1	RED
P-SANR	Sanitary Drainage	11	TAN
P-SANR-PIPE	Sanitary Piping	11	TAN
P-SANR-FIXT	Plumbing Fixtures	11	TAN
P-SANR-FLDR	Floor Drains	10	DK. RED
P-SANR-RISR	Sanitary Risers	11	TAN
P-STRM	Storm Drainage System	11	TAN
P-STRM-PIPE	Storm Drain Piping	11	TAN
P-STRM-RISR	Storm Drain Risers	11	TAN
P-STRM-RFDR	Roof Drains	11	TAN
P-EQPM	Plumbing Miscellaneous Equipment	1	RED
P-FIXT	Plumbing Fixtures	52	AVOCADO
P-ELEV	Elevations	1	RED
P-ELEV-OTLN	Building Outlines	2	YELLOW
P-ELEV-PATT	Textures and Hatch Patterns	10	DK. RED
P-ELEV-IDEN	Identification Numbers	6	MAGENTA
P-SECT	Sections	1	RED
P-SECT-MCUT	Material Cut by Section	2	YELLOW
P-SECT-MBND	Material beyond Section Cut	52	AVOCADO
P-SECT-PATT	Textures and Hatch Patterns	10	DK. RED
P-SECT-IDEN	Identification Numbers	6	MAGENTA

Plumbing (continued)

LAYER NAME	LAYER DESCRIPTION	LAYER	COLOR
P-DETL	Sections	1	RED
P-DETL-MCUT	Material Cut by Section	2	YELLOW
P-DETL-MBND	Material beyond Section Cut	52	AVOCADO
P-DETL-PATT	Textures and Hatch Patterns	10	DK. RED
P-DETL-IDEN	Identification Numbers	6	MAGENTA
	Drawing Information Layers		
P-SHBD	Sheet Border and Title Block Line Work	4	CYAN
P-SHBD-TTLB	Project Title block Information	6	MAGENTA
P-SHBD-TEXT	Title block Text Information	6	MAGENTA
P-SHBD-NP	Sheet Border Non-print Area and Grid Lines	1	RED
P-SHBD-RG	Sheet Border Registration Marks	13	GREY
P-PPLM	Plumbing Plan	1	RED
P-PDRA	Storm Drainage	1	RED
P-PSAN	Sanitary Drainage Plan	1	RED
P-P***	Other Mechanical Plans	1	RED
P-SCHD	Schedules and Title Block Sheets	6	MAGENTA
P-****-NOTE	Notes, Call-outs, and Key Notes	6	MAGENTA
P-****-TEXT	General Notes and Specifications	6	MAGENTA
P-****-SYMB	Symbols, Bubbles, and Targets	11	TAN
P-****-DIMS	Dimensions	13	GREY
P-****-PATT	Cross-hatching and Poche	10	DK. RED

Fire Protection

LAYER NAME	LAYER DESCRIPTION	LAYER	COLOR
Building Information Layers			
F-CO2S	CO2 System	1	RED
F-CO2S-PIPE	CO2 Sprinkler Piping	1	RED
F-CO2S-EQPM	CO2 Equipment	1	RED
Halon			
F-HALN	Halon	1	RED
F-HALN-EQPM	Halon Equipment	1	RED
F-HALN-PIPE	Halon Piping	1	RED
Fire Protection Sprinkler System			
F-SPRN	Fire Protection Sprinkler System	11	TAN
F-SPRN-CLHD	Sprinkler Head (Ceiling)	11	TAN
F-SPRN-OTHD	Sprinkler Head (Other)	11	TAN
F-SPRN-PIPE	Sprinkler Piping	11	TAN
Fire Protection Standpipe System			
F-STAN	Fire Protection Standpipe System	1	RED
Fire Protection System			
F-PROT	Fire Protection System	11	TAN
F-PROT-EQPM	Fire System Equipment (fire Hose Cabinet Extinguishers)	11	TAN
F-PROT-ALRM	Fire Alarm	11	TAN
F-PROT-SMOK	Smoke Detectors or Heat Sensors	11	TAN
Elevations			
F-ELEV	Elevations	1	RED
F-ELEV-OTLN	Building Outlines	2	YELLOW
F-ELEV-PATT	Textures and Hatch Patterns	10	DK. RED
F-ELEV-IDEN	Identification Numbers	6	MAGENTA
Sections			
F-SECT	Sections	1	RED
F-SECT-MCUT	Material Cut by Section	2	YELLOW
F-SECT-MBND	Material beyond Section Cut	52	AVOCADO
F-SECT-PATT	Textures and Hatch Patterns	10	DK. RED
F-SECT-IDEN	Identification Numbers	6	MAGENTA

Fire Protection (continued)

LAYER NAME	LAYER DESCRIPTION	LAYER	COLOR
F-DETL	Sections	1	RED
F-DETL-MCUT	Material Cut by Section	2	YELLOW
F-DETL-MBND	Material beyond Section Cut	52	AVOCADO
F-DETL-PATT	Textures and Hatch Patterns	10	DK. RED
F-DETL-IDEN	Identification Numbers	6	MAGENTA
Drawing Information Layers			
F-SHBD	Sheet Border and Title Block Line Work	4	CYAN
F-SHBD-TTLB	Project Title block Information	6	MAGENTA
F-SHBD-TEXT	Title block Text Information	6	MAGENTA
F-SHBD-NP	Sheet Border Non-print Area and Grid Lines	1	RED
F-SHBD-RG	Sheet Border Registration Marks	13	GREY
F-PSPR	Sprinkler Plan	1	RED
F-RISR	Sprinkler Riser Diagram	1	RED
F-PFPE	Fire Protection Equipment Plan	1	RED
F-P***	Other Mechanical Plans	1	RED
F-SCHD	Schedules and Title Block Sheets	6	MAGENTA
F-****-NOTE	Notes, Call-outs, and Key Notes	6	MAGENTA
F-****-TEXT	General Notes and Specifications	6	MAGENTA
F-****-SYMB	Symbols, Bubbles, and Targets	11	TAN
F-****-DIMS	Dimensions	13	GREY
F-****-PATT	Cross-hatching and Poche	10	DK. RED

Electrical

LAYER NAME	LAYER DESCRIPTION	LAYER	COLOR
E-LITE	Lighting	13	GREY
E-LITE-SPCL	Special Lighting	13	GREY
E-LITE-EMER	Emergency Lighting	13	GREY
E-LITE-EXIT	Exit Lighting	13	GREY
E-LITE-CLNG	Ceiling-mounted Lighting	13	GREY
E-LITE-WALL	Wall-mounted Lighting	13	GREY
E-LITE-FLOR	Floor-Mounted Lighting	13	GREY
E-LITE-OTLN	Lighting outline for Background (Optional)	13	GREY
E-LITE-NUMB	Lighting Circuit Numbers	6	MAGENTA
E-LITE-ROOF	Roof Lighting	13	GREY
E-LITE-SITE	Site Lighting (see also Civic Group)	13	GREY
E-LITE-SWCH	Lighting Switching	13	GREY
E-LITE-CIRC	Lighting Circuits	13	GREY
E-LITE-IDEN	Luminaire Identification and Text	13	GREY
E-POWR	Power	6	MAGENTA
E-POWR-WALL	Power Wall Outlets and Receptacles	6	MAGENTA
E-POWR-CLNG	Power Ceiling Receptacles and Devices	6	MAGENTA
E-POWR-PANL	Power Panels	6	MAGENTA
E-POWR-EQMP	Power Equipment	6	MAGENTA
E-POWR-SWBD	Power Switchboard	6	MAGENTA
E-POWR-CIRC	Power Circuits	6	MAGENTA
E-POWR-URAC	Under Floor Raceways	6	MAGENTA
E-POWR-UCPT	Under Carpet Raceways	6	MAGENTA
E-POWR-CABL	Cable Trays	6	MAGENTA
E-POWR-FEED	Feeders	6	MAGENTA
E-POWR-BUSW	Busways	6	MAGENTA
E-POWR-NUMB	Power Circuit Numbers	6	MAGENTA
E-POWR-IDEN	Power Identification and Text	6	MAGENTA
E-POWR-SITE	Site Power (see also Civil Group)	6	MAGENTA
E-POWR-ROOF	Roof Power	6	MAGENTA
E-POWR-OTLN	Power Outline for Backgrounds	4	CYAN

Electrical (continued)

LAYER NAME	LAYER DESCRIPTION	LAYER	COLOR
E-CTRL	Electrical Control Systems	13	GREY
E-CTRL-DEVC	Control System Devices	13	GREY
E-CTRL-WIRE	Control System Wiring	13	GREY
E-GRND	Ground System	13	GREY
E-GRND-CIRC	Ground System Circuits	13	GREY
E-GRND-REFR	Reference Ground System	13	GREY
E-GRND-EQUI	Equipotential Ground System	13	GREY
E-GRND-DIAG	Ground System Diagram	13	GREY
E-ELEV	Elevations	1	RED
E-ELEV-OTLN	Building Outlines	2	YELLOW
E-ELEV-PATT	Textures and Hatch Patterns	10	DK. RED
E-ELEV-IDEN	Identification Numbers	6	MAGENTA
E-SECT	Sections	1	RED
E-SECT-MCUT	Material Cut by Section	2	YELLOW
E-SECT-MBND	Material beyond Section Cut	52	AVOCADO
E-SECT-PATT	Textures and Hatch Patterns	3	GREEN
E-SECT-IDEN	Identification Numbers	6	MAGENTA
E-DETL	Sections	1	RED
E-DETL-MCUT	Material Cut by Section	2	YELLOW
E-DETL-MBND	Material beyond Section Cut	52	AVOCADO
E-DETL-PATT	Textures and Hatch Patterns	10	DK. RED
E-DETL-IDEN	Identification Numbers	6	MAGENTA

**Electrical Auxiliary Systems:
Major and Minor Groups**

LAYER NAME	LAYER DESCRIPTION	LAYER	COLOR
E-AUXL	Auxiliary	1	RED
E-LTNG	Lighting Protection System	1	RED
E-FIRE	Fire Alarm and Fire Extinguishers	1	RED
E-COMM	Telephone and Communications Outlets	1	RED
E-DATA	Data Outlets	1	RED
E-SOUN	Sound or PA System	1	RED
E-TVAN	TV Antenna System	1	RED
E-CCTV	Closed Circuit TV	1	RED
E-NURS	Nurse Call System	1	RED
E-SERT	Security	1	RED
E-PGNG	Paging System	1	RED
E-DICT	Central Dictation System	1	RED
E-BELL	Bell System	1	RED
E-CLOK	Clock System	1	RED
E-ALRM	Miscellaneous Alarm System	1	RED
E-INTC	Intercom System	1	RED

Electrical Auxiliary Systems: Modifiers

LAYER NAME	LAYER DESCRIPTION	LAYER	COLOR
E-****-CIRC	Circuit Information	6	MAGENTA
E-****-IDEN	Identification Text	6	MAGENTA
E-****-EQPM	Equipment Layout	6	MAGENTA
E-****-DEVC	Utilization Device Layout	1	RED
E-****-WALL	Wall-mounted Device Layout	1	RED
E-****-CLNG	Ceiling-mounted Device Layout	6	MAGENTA
E-****-FLOR	Floor-mounted Device Layout	6	MAGENTA
E-****-DGRM	Interconnection Diagram	1	RED
E-****-WIRE	Wiring Line Work and Information	1	RED
E-****-NUMB	Numbers for Systems (Zones, etc.)	1	RED

Electrical (continued)

LAYER NAME	LAYER DESCRIPTION	LAYER	COLOR
Drawing Information Layers			
E-SHBD	Sheet Border and Title Block Line Work	4	CYAN
E-SHBD-TTLB	Project Titleblock Information	6	MAGENTA
E-SHBD-TEXT	Title block Text Information	6	MAGENTA
E-SHBD-NP	Sheet Border Non-print Area and Grid Lines	1	RED
E-SHBD-RG	Sheet Border Registration Marks	13	GREY
E-PLIT	Lighting Plan	1	RED
E-PPOW	Power Plan	1	RED
E-PCOM	Communications Systems Plan	1	RED
E-PAUX	Auxiliary Systems Plan	1	RED
E-PROF	Electrical Roof Plans	1	RED
E-P***	Other Mechanical Plans	1	RED
E-LEGN	Legend of Symbols	6	MAGENTA
E-1LIN	One Line Diagrams	13	GREY
E-RISR	Riser Diagram	13	GREY
E-SCHD	Schedules and Title Block Sheets	6	MAGENTA
E-****-NOTE	Notes, Call-outs, and Key Notes	6	MAGENTA
E-****-TEXT	General Notes and Specifications	6	MAGENTA
E-****-SYMB	Symbols, Bubbles, and Targets	11	TAN
E-****-DIMS	Dimensions	13	GREY
E-****-PATT	Cross-hatching and Poche	3	GREEN

Landscape Architecture

LAYER NAME	LAYER DESCRIPTION	LAYER	COLOR
L-PLNT	Plant and Landscape Materials	1	RED
L-PLNE-TREE	New Trees	5	BLUE
L-PLNT-TXST	Existing Trees to Remain	1	RED
L-PLNT-TDMO	Existing Trees to be Removed (shown Dashed)	22	BROWN
L-PLNT-GRND	Ground Covers and Vines	52	AVOCADO
L-PLNE-BEDS	Rock, Bark, and Other Landscape Beds	83	TEAL
L-PLNT-TURF	Lawn Areas	52	AVOCADO
L-PLNT-PLAN	Schematic Planting Plans	1	RED
L-IRRG	Irrigation System	13	GREY
L-IRRG-SPKL	Irrigation Sprinklers	13	GREY
L-IRRG-PIPE	Irrigation Piping	13	GREY
L-IRRG-EQPT	Irrigation Equipment	13	GREY
L-IRRG-COVR	Irrigation Coverage	3	GREEN
L-IRRG-PIPE-MAIN	Irrigation Main Line	2	YELLOW
L-IRRG-TEXT	Irrigation Text	6	MAGENTA
L-PLAY	Sections	1	RED
L-PLAY-EQUP	Play Equipment	13	DK. RED
L-PLAY-EQUP-NEW	New Play Equipment	13	GREY
L-PLAY-EQUP-DEMO	Demo Play Equipment (shown Dashed)	22	BROWN
L-PLAY-STRIP	Playground Stripping	13	GREY
L-PLAY-STRIP-NEW	New Playground Stripping	40	MUSTARD
L-PLAY-STRIP-DEMO	Demo Playground Stripping	5	BLUE
L-LP-TEXT	Stripping (line painting) Text	5	BLUE
L-SITE	Site Improvements	11	TAN
L-SITE-FENC	Fencing	11	TAN
L-SITE-WALL	Walls	22	BROWN
L-SITE-STEP	Steps	1	RED
L-SITE-DECK	Decks	1	RED
L-SITE-BRDG	Bridges	11	TAN
L-SITE-POOL	Pool	11	TAN
L-SITE-SPRT	Sports Field	52	AVOCADO
L-SITE-FURN	Site Furnishings	22	BROWN

Landscape Architecture (Continued)

LAYER NAME	LAYER DESCRIPTION	LAYER	COLOR
L-ELEV	Elevations	1	RED
L-ELEV-OTLN	Building Outlines	2	YELLOW
L-ELEV-PATT	Textures and Hatch Patterns	3	GREEN
L-ELEV-IDEN	Identification Numbers	6	MAGENTA
L-WALK	Walks and Steps	5	BLUE
L-WALK-PATT	Walks and Steps Cross-hatch Patters	5	BLUE
L-SECT	Sections	1	RED
L-SECT-MCUT	Material Cut by Section	2	YELLOW
L-SECT-MBND	Material beyond Section Cut	52	AVOCADO
L-SECT-PATT	Textures and Hatch Patterns	10	DK. RED
L-SECT-IDEN	Identification Numbers	6	MAGENTA
L-DETL	Sections	1	RED
L-DETL-MCUT	Material Cut by Section	2	YELLOW
L-DETL-MBND	Material beyond Section Cut	52	AVOCADO
L-DETL-PATT	Textures and Hatch Patterns	3	GREEN
L-DETL-IDEN	Identification Numbers	6	MAGENTA
	Drawing Information Layers		
L-SHBD	Sheet Border and Title Block Line Work	4	CYAN
L-SHBD-TTLB	Project Title block Information	6	MAGENTA
L-SHBD-TEXT	Title block Text Information	6	MAGENTA
L-SHBD-NP	Sheet Border Non-print Area and Grid Lines	1	RED
L-SHBD-RG	Sheet Border Registration Marks	13	GREY
L-PSIT	Site Plan	1	RED
L-PPLA	Planting Drawing	1	RED
L-PIRR	Irrigation Drawing	1	RED
L-PWLK	Walks and Paving Plan	1	RED
L-P***	Other Mechanical Plans	1	RED

Landscape Architecture (Continued)

LAYER NAME	LAYER DESCRIPTION	LAYER	COLOR
L-SCHD	Schedules and Title Block Sheets	6	MAGENTA
L-****-NOTE	Notes, Call-outs, and Key Notes	6	MAGENTA
L-****-TEXT	General Notes and Specifications	6	MAGENTA
L-****-SYMB	Symbols, Bubbles, and Targets	11	TAN
L-****-DIMS	Dimensions	13	GREY
L-****-PATT	Cross-hatching and Poche	10	DK. RED

EXHIBIT 'A'

San Diego Community College District



CD-Rom Label Format and Instructions

1. Provide the pertinent data at the lines/spaces indicated.
2. Font: Arial throughout with font sizes as follows:
 - A. Site & Project name: 12
 - B. Informational data: 8
 - C. Consultant information: 8
3. Locations shown for data entry are absolute. Firms with existing CD-Rom labels to adjust their format as required to comply with examples shown for data entry locations.
4. Place an "x" in one of the two boxes provided to specify the disc contents.

CD-Label Background Image

Insert this image into the background of your CD Label program. Create text fields for each entry in the appropriate location.

See the CD-Label Layout image on the next page.

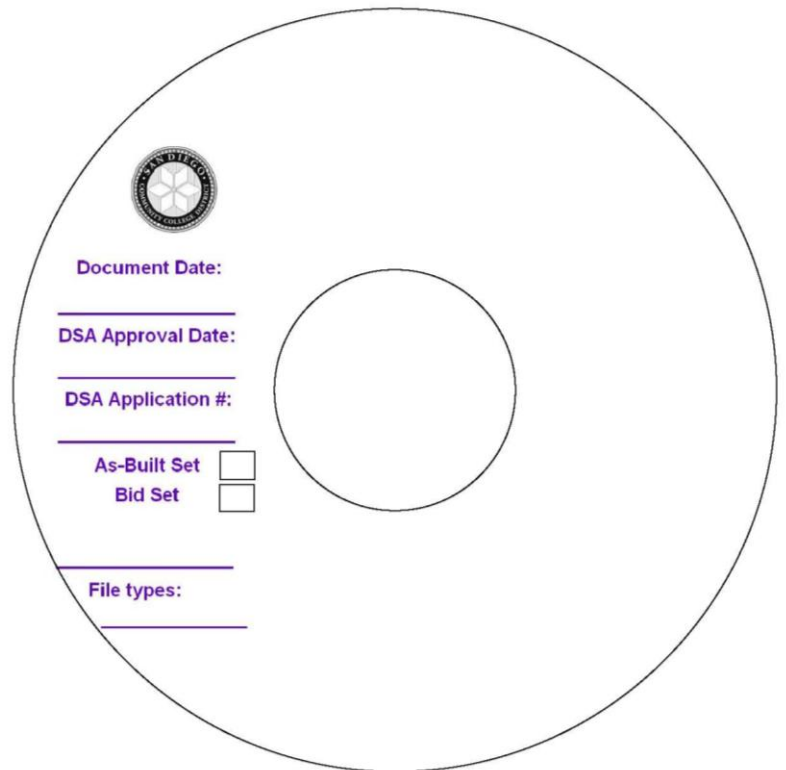


EXHIBIT 'B'

Example

CD-Label Layout

The CD label layout is circular with a central hole. The text is arranged as follows:

- Top:** Site Name, Project name and description: Arial Font 12 pt.
- Top-Left:** A circular logo for the State of Oregon.
- Left Side (top to bottom):**
 - Document Date: _____
 - DSA Approval Date: _____
 - DSA Application #: _____
 - As-Built Set
 - Bid Set
 - File types: _____
- Center:** A large empty circle representing the CD's center hole.
- Right Side:** Consultant's Logo (optional) written vertically.
- Bottom-Right:** Consultant's Name, Address, Phone Number: Arial Font 8 pt.